

# 178 Ridge Rd., Suite H

Southview Industrial Park, South Brunswick, NJ

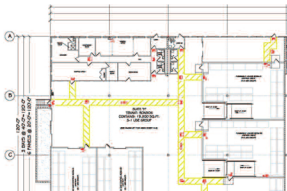


## Space Available:

- 14,400 SF

## Building:

- Total Building SF . . . . . 48,000 SF
- Office SF . . . . . 1,116 SF
- Warehouse SF . . . . . 13,384 SF
- Year Built . . . . . 1990
- Construction Type . . . . . Tilt-up pre-cast concrete panels
- Sprinklers . . . . . Wet system .33/3000
- Column Span . . . . . 40' x 40'
- Clear Height . . . . . 22'
- Car Parking . . . . . Ample
- Loading Docks . . . . . 3 Tailboard
- Power . . . . . 200 AMPS



## Contacts:

Melissa Camarata: Leasing Director  
[melissac@greekdevelopment.com](mailto:melissac@greekdevelopment.com)

Beth Magnani: Leasing Associate  
[bethm@greekdevelopment.com](mailto:bethm@greekdevelopment.com)



**F. GREEK DEVELOPMENT**

33 Cotters Lane  
East Brunswick, NJ 08816  
P: 732-257-7353  
F: 732-257-9647



**REAL ESTATE**